

# Adult Programs *For high school age and older.*

## Introduction to Snowshoeing

Before heading out this season, join us for a lesson on what you need to know to go snowshoeing in McHenry County. How should you dress, where can you go, and what equipment do you need? We'll answer these questions and more. Staff from 2K Adventure Gear of Richmond will showcase some winter gear and share some advice.

**Wednesday, December 7, 7:00–8:00 p.m.**  
Glacial Park, Lost Valley Visitor Center  
Code: 211272-01, \$0 R/ \$6 NR

## Well-Planned Garden

Gather with new and seasoned gardeners as we plan for the next garden season. Whether you are planning a new or existing vegetable or flower garden, there will be ideas for you. Companion planting, organic pest control, native plantings, and other methods used to create a more sustainable garden will also be discussed. Feel free to bring your garden journals to share your own discoveries with the group.

**Wednesday, January 18, 7:00–8:30 p.m.**  
Prairieview Education Center  
Code: 212204-01, \$0 R/ \$6 NR

## Breakfast and Birding

Come enjoy a hot beverage and a breakfast treat on a cold winter morning before setting off on a hike to explore the forests and prairies of Pleasant Valley in search of McHenry County's winter birds. Bring binoculars and a field guide if you have them. We will have limited supplies to share.

**Sunday, January 22, 8:00–10:00 a.m.**  
Pleasant Valley, Shelter #1,  
Code: 212205-01, \$2 R/ \$2.50 NR

## Winter on the Frontier

How did the early natives and pioneers survive winters here in the Midwest without all of our modern conveniences? Join us for stories and winter survival techniques from the frontier. This program is appropriate for history buffs, historical reenactors, or those just curious about winter survival. *There is a separate but simultaneous "Prairie Pioneers" program for children ages 6–13, page 20.*

**Friday, February 3, 7:00–8:30 p.m.**  
Prairieview Education Center  
Code: 212155-01, \$0 R/ \$6 NR

## Owl Walk

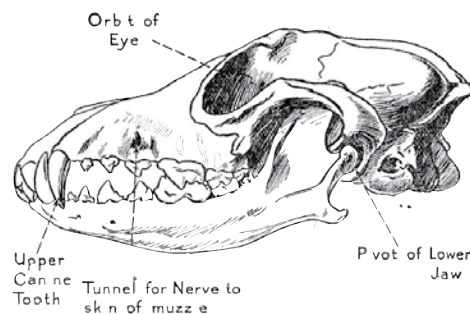
Search for sights and sounds of the owls that reside at Glacial Park during the winter months. First, we'll go for a one mile hike over hilly terrain to listen for owls. Then we will head inside where a slide presentation and a live owl will introduce hikers to these magnificent creatures. Dress for the weather.

**Sunday, December 11, 5:00–7:00 p.m.**  
Glacial Park, Lost Valley Visitor Center  
Code: 211265-01, \$0 R/ \$6 NR

## Owls of McHenry County

Winter is the ideal time to observe owls and owl behavior. The owls are busy staking claim to territories and seeking a mate to share it with. Learn more about these 'tigers of the sky'. Meet live owls, share stories and folklore, and go for a short hike in search of owls. Please be on time and dress for the weather. *There is a separate but simultaneous "Owl Prowl" program for children ages 8–13, page 20.*

**Friday, January 13, 7:00–8:30 p.m.**  
Prairieview Education Center  
Code: 212101-01, \$0 R/ \$6 NR



## Skull Showcase and Study

Grab this chance to view and study skulls of our local fauna for your artistic endeavors. Use your camera, paints, charcoal, pencils or other medium to create a portrait or two. Each display will be designed so that you can capture the strength and fragility of nature in whatever medium you choose. The displays will include the natural history of the species so you can find out more about how the animal lived. This program will have a studio atmosphere.

**Saturday, February 4, 1:00–4:00 p.m.**  
Glacial Park, Lost Valley Visitor Center  
Code: 212104-01, \$0 R/ \$6 NR

## Winter Tree Investigations

Marengo Ridge is blessed with a wide variety of trees. These trees are easy to recognize when they have their leaves on them, but identification becomes more challenging over the winter. We will investigate ways to identify both deciduous and coniferous trees any time of year.

**Saturday, February 11, 1:00–2:30 p.m.**  
Marengo Ridge, Shelter #1  
Code: 21157-01, \$0 R/ \$2 NR

## "Waterlife": An Epic Cinematic Poem

This film tells the epic story of the Great Lakes by following the cascade of its water from Northern Lake Superior to the Atlantic Ocean through the lives of some of the 35 million people who rely on the lakes for survival. Join us to view this outstanding documentary on this unique and precious resource. "A visually stunning and eye-opening film."—Noah Hall, Founder, Great Lakes Environmental Law Center.

**Wednesday, February 29, 7:00–8:30 p.m.**  
Glacial Park, Lost Valley Visitor Center  
Code: 212107-01, \$2 R/ \$3 NR



## Sustainability 101:

### Permaculture: Sustainable Landscaping

Have you heard the term 'permaculture' but weren't quite sure how this huge concept might apply to you? Come learn about another way of looking at the natural world—especially as it relates to our yards. Find out how you can think and work differently to make your landscape more sustainable and environmentally friendly. Milton Dixon of Midwest Permaculture will serve as our instructor for the evening.

**Monday, January 9, 6:30–8:00 p.m.**

Prairieview Education Center  
Code: 212367-01, \$0 R/ \$6 NR

### A Green Clean

Join us as we turn the Lost Valley Visitor Center into a laboratory to make some environmentally friendly cleaning solutions. We will try our hand at mixing our own laundry detergent and general surface cleaner and will discuss and share other recipes as well.

**Wednesday, February 15, 7:00–8:30 p.m.**

Glacial Park, Lost Valley Visitor Center  
Code: 212271-01, \$5 R/ \$6.25 NR

### Land Preservation Through the Years

The Conservation District has been celebrating 40 years of work, and we hope you've had a chance to enjoy some of those stories of accomplishment as we reviewed them with you this year. Come continue that celebration and be inspired as we learn more about the pioneers of preservation in our country. We'll also head out for a walk to enjoy what nature has to offer us this time of year. Dress for the weather.

**Sunday, February 5, 1:00–2:30 p.m.**

Prairieview Education Center  
Code: 212372-01, \$0 R/ \$6 NR

### Frog Monitoring Workshop

**Ages 18+**

The public (ages 18 and older) is welcome to participate in a training session to learn the techniques and protocol for monitoring frogs and toads by their calls. After completing the training, volunteers monitor District areas or their own private wetlands. The Conservation District in conjunction with Chicago Wilderness and the Habitat Project is sponsoring this program to gather information on the abundance and distribution of frogs and toads throughout the region. For more information contact Sara Denham, (815) 728-8307 or check out [www.habitatproject.org/frogsurvey](http://www.habitatproject.org/frogsurvey).

**Wednesday, February 22, 7:00–9:00 p.m.**

Prairieview Education Center  
Code: 212551-01, FREE



## Hands-On History:

### *Working with Bone* Limit 10

Native Americans throughout North America used bone to create a variety of tools, weapons, and jewelry. In this class you will learn the skills to work with deer, steer, buffalo, and other mammal bone to make any of a variety of items. In class you will complete a cross, arrow point, turtle, or beads to make into a necklace or bracelet. If you have a coping saw or hack saw, please bring them. All other supplies are provided. *Payment must accompany registration and must be received no later than Friday, January 20. No refunds will be issued for cancellations made after Jan. 20.*

**Saturday, January 28, 1:00–5:00 p.m.**

Glacial Park, Lost Valley Visitor Center  
Code: 212273-01, \$15 R/ \$18.75 NR

### *Basketmaking* Limit 15

Use a traditional skill to make a product with a modern twist while you weave a classy jar candle holder. In this class you will learn start stop weaving along with a unique rim. Kits will be available at extra cost to weave another at home for yourself or a gift. *Payment must accompany registration and must be received no later than Friday, Jan. 27. No refunds will be issued for cancellations made after Jan. 27.*

**Saturday, February 4, 10:00 a.m.–12:00 p.m.**

Glacial Park, Lost Valley Visitor Center  
Code: 212274-01, \$30 R/ \$37.50 NR

### Change of plans?

Contact Prairieview Education Center at (815) 479-5779 to allow registrants on the waiting lists to be contacted. Unless otherwise noted, an advance notice of seven days is required to receive a refund.