

DECEMBER

Ages 12–15 Winter Adventure Camp

Sledding, snowshoeing, skiing, survival skills, hiking, a campfire, night explorations, stargazing, and more!

December 27–29, Glacial Park Details on page 16.

| THURSDAY | FRIDAY | SATURDAY |
|--|---|---|
| 1 | 2 | 3 Nature Tales, p. 27 10:30–11:30 am, Prairieview Frozen Fauna, p. 18 1–2:30 pm, Pleasant Valley |
| 8 | 9 Discovery Days, p. 27 10–11 am, Glacial Park | 10 Make Your Own Wooden Toys, p. 27 9:30–11:30 am, Glacial Park |
| 15 | 16 | 17 Preparing for Winter, p. 27 10–11:30 am, Glacial Park Historical Holidays, p. 18 3–5 pm, Glacial Park |
| 22 | 23 District offices closed. | 24 District offices closed. |
| 29 Nature Play Open House, p. 27 10 am–12 pm, Prairieview | 30 District offices closed. | 31 District offices closed. |

| | | | |
|---|--|--|---|
| 4 Teen Scene: Cooperative Conservation— Volunteer Opportunities for Teens, p. 20 1–2 pm, Prairieview | 5 | 6 | 7 Introduction to Snowshoeing, p. 22 7–8 pm, Glacial Park |
| 11 Owl Walk, p. 22 5–7 pm, Glacial Park Squirrel Survivor, p. 27 1–2:30 pm, Coral Woods | 12 | 13 | 14 |
| 18 Living History Holiday Open House, 12–4 pm, Powers-Walker House, Glacial Park, p. 16 | 19 Winter Nature Night, p. 20 6–9 pm, Prairieview | 20 | 21 Squirreling Around in Winter, p. 20 1–2:30 pm, Living Land Farm Solstice Night Hike, p. 18 6:30–8:00 pm, Prairieview |
| CHRISTMAS DAY 25 District offices closed. | 26 District offices closed. | 27  Christmas Tree Recycling Dec. 26–Jan. 15 Details on page 15. | 28 |

JANUARY

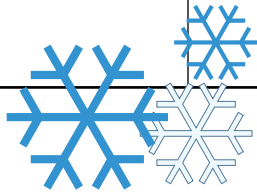
| SUNDAY | MONDAY | TUESDAY | WEDNESDAY | THURSDAY | FRIDAY | SATURDAY |
|---|--|-----------|---|-----------|--|---|
| NEW YEAR'S DAY 1 District offices closed. | 2 District offices closed. | 3 | 4 | 5 | 6 | 7 Winter Scavenger Hunt, p. 18 1–2:30 pm, The Hollows |
| 8 | 9 Discovery Days, p. 27 10:30–11:30 am, Prairieview Sustainability 101: Permaculture: Sustainable Landscaping, p. 27 6:30–8 pm, Prairieview | 10 | 11 | 12 | 13 Owls of McHenry County, p. 22 7–8:30 pm, Prairieview Owl Prowl, p. 20 7–8:30 pm, Prairieview | 14 Wintertime is Naturetime!, p. 18 10:30 am–12 pm, Pleasant Valley An Afternoon with the Short-Eared Owls, p. 18 4–5:30 pm, Glacial Park |
| 15 FOX Club: Winter Gathering — LET'S GO SLEDDING!, p. 16 2–3:30 pm, Glacial Park | 16 C.S.I.: Critter Scene Investigation, p. 20 1–2:30 pm, Glacial Park | 17 | 18 That's Gross, p. 27 7–8:30 pm, Glacial Park Well-Planned Garden, p. 22 7–8:30 pm, Prairieview | 19 | 20 | 21 Teen Scene: Cross-Country Skiing, p. 20 1–3:30 pm, The Hollows |
| 22 Breakfast and Birding, p. 22 8–10 am, Pleasant Valley | 23 Coyotes & Cocoa, p. 18 6:30–8 pm, Living Land Farm | 24 | 25 | 26 | 27 Nature at Night, p. 17 6:30–9:30 pm, Prairieview | 28 Bundle Up, p. 21 10–11:30 am, Stickney Run Hands On History: Working with Bone, p. 23 1–5 pm, Glacial Park What about Weasels?, p. 18 2–3:30 pm, Prairieview |
| 29 | 30 | 31 |  <p>Friday, January 27, 6:30–9:30 p.m. Prairieview Education Center, Crystal Lake Details on page 17.</p> <h2>Nature at Night</h2> | | | |

FEBRUARY



Special Exhibit:
Capturing the Spirit of Land and Nature
February 1–March 30
Prairieview Education Center

| | | | WEDNESDAY | THURSDAY | FRIDAY | SATURDAY |
|---|---|--|---|--|--|--|
| | | | 1 | 2 Groundhog Day!, p. 21 10:30–11:30 am, Prairieview | 3 Winter on the Frontier, p. 22 7–8:30 pm, Prairieview Prairie Pioneers, p. 20 7–9 pm, Prairieview | 4 Snow Ventures, p. 20 10:30 am–12 pm, Pleasant Valley Hands On History: Basketmaking, p. 23 10 am–12 pm, Glacial Park Explorer Day: Winter Wonders , 10 am–2 pm, Glacial Park, p. 17 Skull Showcase, p. 22 1–4 pm, Glacial Park |
| 5 Land Preservation Through the Years, p. 23 1–2:30 pm, Prairieview Winter Woods Walk, p. 18 2–3:30 pm, Rush Creek | 6 | 7 Discovery Days, p. 21 10–11 am, Prairieview | 8 | 9 | 10 | 11 Winter Tree Investigations, p. 22 1–2:30 pm, Marengo Ridge Natural Valentine, p. 19 1–2:30 pm, Prairieview |
| 12 Capturing the Spirit of Land and Nature: Artist Reception , p. 16 2–4 pm, Prairieview | 13 | 14 | 15 Sustainability 101: A Green Clean, p. 23 7–8:30 pm, Glacial Park | 16 | 17 The Better to Eat With, p. 21 7–8:30 pm, Prairieview Winter Constellations, p. 19 7–8:30 pm, Pleasant Valley | 18 Teen Scene: Hideout at Powers-Walker House, p. 20 3:30–6 pm, Glacial Park |
| 19 | 20 Fantastic Fur, p. 20 10–11:30 am, Prairieview | 21 | 22 Frog Monitoring Workshop, p. 23 7–9 pm, Prairieview | <p>leave no child inside a chicago wilderness initiative</p> <p>Explorer Day: Winter Wonders Saturday, February 4, 10 am–2 pm Glacial Park, Lost Valley Visitor Center Details on page 17.</p> | | |
| 26 | 27 | 28 | 29 "Waterlife": An Epic Cinematic Poem, p. 22 7–8:30 pm, Glacial Park | | | |

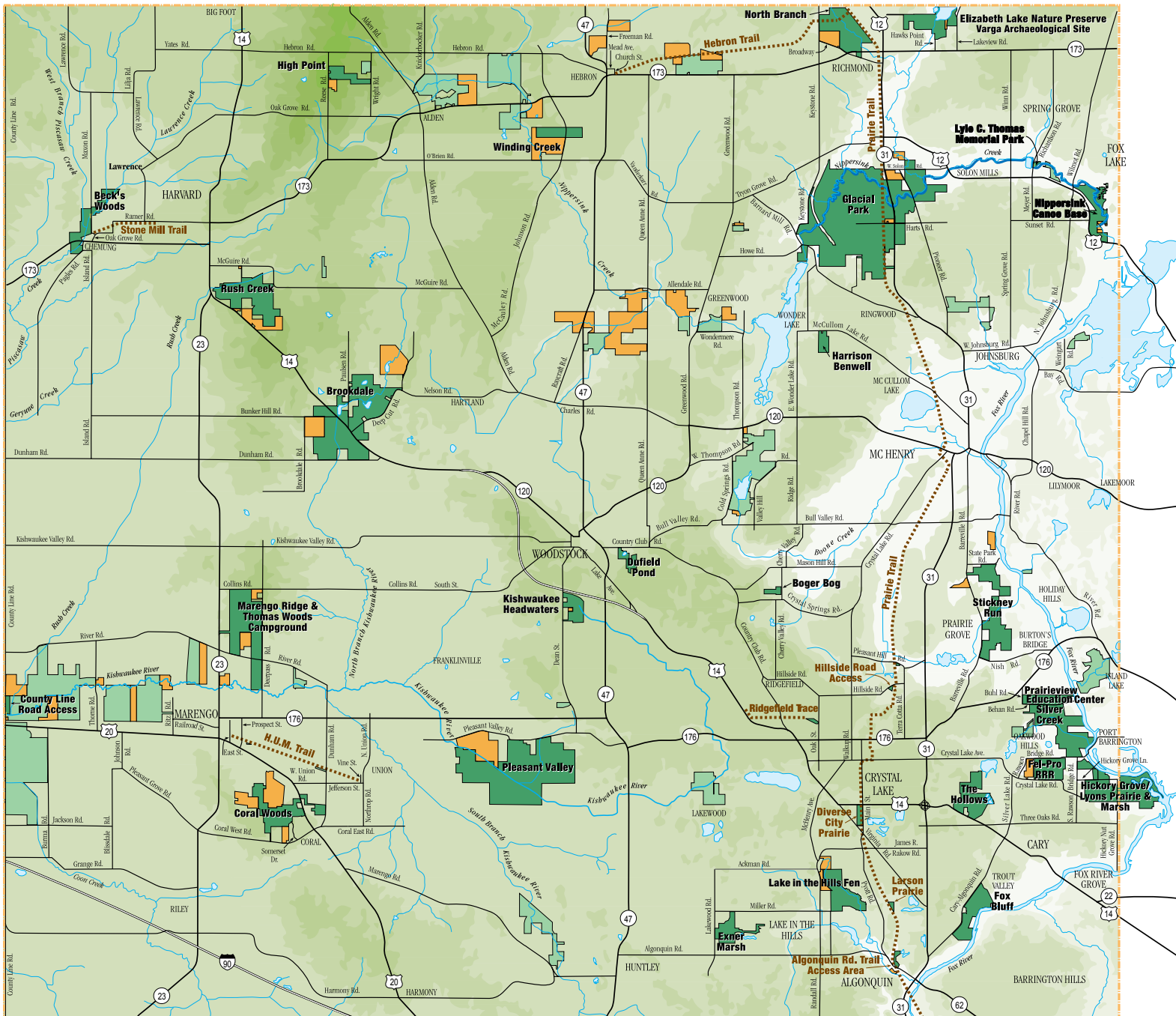


Site & Seasonal Closures

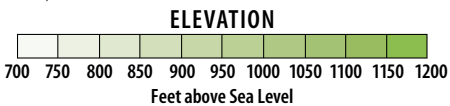
The majority of the Conservation District sites are open year-round; however, some sites require seasonal closings.

| LOCATION | CLOSING DATES/CONDITIONS |
|--|---|
| Hunting – site closed for short periods of time to ensure maximum safety for our visitors. | |
| Fox Bluff | November 1–January 15 |
| Glacial Park & Lost Valley Visitor Center | December 1–4 |
| Hickory Grove Riverfront*, Lyons Prairie & Marsh, Silver Creek | November 1–January 15 *Open for fishing til first ice, campground & trails to Silver Creek closed |
| Pleasant Valley | November 18–20 |
| Stickney Run | November 5–13 |
| Beck's Woods, Coral Woods, Brookdale (trails), Marengo Ridge, and Rush Creek | November 18–20, December 1–4 |
| Weather Related – weather permitting most sites are scheduled to reopen April 2. Call or check the website for details. | |
| Beck's Woods & Piskasaw North, Chemung | First significant snowfall |
| Boger Bog, Bull Valley | First significant snowfall |
| Brookdale/Paulsen Road Parking Lot, Woodstock | First significant snowfall but site remains open |
| County Line Road Access, Marengo | October 1 |
| Dufield Pond, Woodstock | First ice and stays closed |
| Elizabeth Lake Nature Preserve Varga Archeological Site, Richmond | First significant snowfall |
| Exner Marsh/Miller Road Parking Lot, LITH | First significant snowfall but site remains open |
| Fox Bluff/Cold Springs Rd. Parking Lot, Cary | November 1– April 1, parking lot closed. Site is open after January 15. |
| Hickory Grove Riverfront, Cary | First ice and stays closed. Campground & trails to Silver Creek closed Nov. 1–Jan. 15. |
| High Point, Harvard | November 1 |
| Huntley-Union-Marengo (HUM) Trail Parking Lot, Marengo | First significant snowfall |
| Kishwaukee Headwaters, Woodstock | First significant snowfall |
| Nippersink Canoe Base, Spring Grove | November 1 |
| North Branch/Parking Lot, Richmond | First significant snowfall |
| Pioneer Canoe Landing, Richmond | November 1 |
| Prairie Trail/Meyer, Algonquin & Hillside Road Parking Lots | First significant snowfall |
| Thomas Woods at Marengo Ridge, Marengo | October 28 |
| Winding Creek/Main Parking Lot, Hebron | First significant snowfall but site remains open |





Last updated: July 2011



Brookdale Administrative Office

18410 US Highway 14
Woodstock, IL 60098
815.338.6223

Hours:
Monday–Friday, 8 a.m.–4:30 p.m.

Prairieview Education Center

2112 Behan Rd., Crystal Lake, IL 60014
815.479.5779

April–October Hours:
Monday–Saturday, 9 a.m.–5 p.m.
Sunday, 1 p.m.–5 p.m.

November–March Hours:
Monday–Friday, 9 a.m.–5 p.m.
Saturday, 10 a.m.–4 p.m., Sunday 12–4 p.m.

Lost Valley Visitor Center

Route 31 and Harts Rd.
Ringwood, IL
815.678.4532

April–October Hours:
Daily, 8 a.m.–6 p.m.

November–March Hours:
Monday–Friday, 8 a.m.–4:30 p.m.
Saturday and Sunday, 9 a.m.–4 p.m.

Wildlife Resource Center

815.728.8307

McHenry County Conservation District manages over 25,000 acres of open space graced with woodlands, prairies, wetlands, and savannas. Trails and other recreational amenities have been added within 32 conservation areas where the public can enjoy hiking, biking, fishing, canoeing, picnicking, horseback riding, camping, cross-country skiing and snowmobiling.



McHenry County
CONSERVATION DISTRICT